

**CANARA**  
Equipments

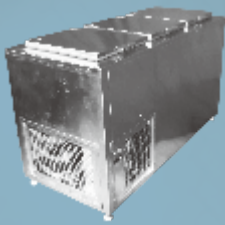
Refrigeration & Kitchen Equipments

*The No. 1 choice of any  
Professional Chef*

**FREEZERS - COOLERS  
KITCHEN EQUIPMENT  
DISPLAY SHOWCASES**



# REFRIGERATION



3 Door Bottle Cooler



4 Door Cooler / Freezer



3 Compartment Upright Chiller/Freezer



Churner Unit



VISI Upright Cooler



VISI Upright Bottle Cooler



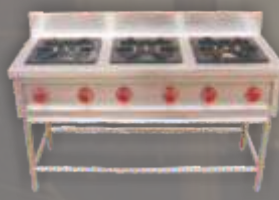
4 Compartment Upright Chiller/Freezer



Water Cooler



Chinese Cooking Range



Indian Gas Range



4 Burner Cooking Range



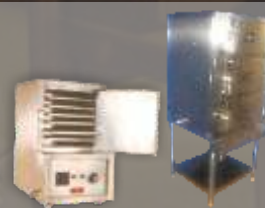
Stock Pot Range



Deep Fat Fryer



Salamander (Toaster)



Idli Steamer - Steam Operated



Dosa Plate



Pizza Oven



Steam Cooking Vessel



Tea, Coffee, Milk Dispenser



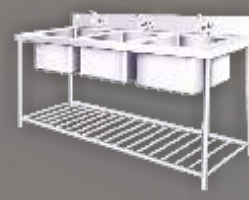
Pulveriser



Work Table

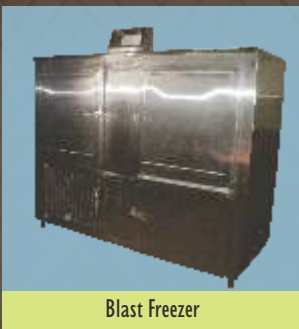


Sink Unit



Sterilising Sink

# KITCHEN EQUIPMENTS



Blast Freezer



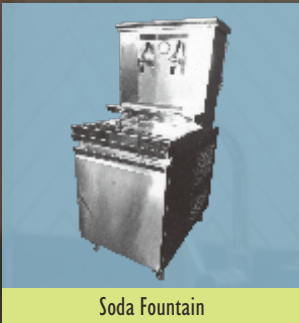
Juice Display Counter



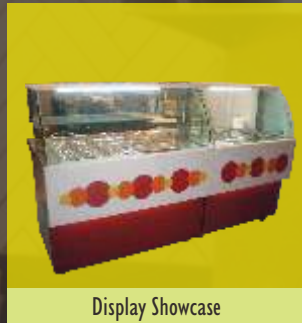
Ice-Cream Display Showcase



"C" Bend Display Showcase



Soda Fountain



Display Showcase



"L" Type Display Showcase



Vertical Display Showcase

DISPLAY COUNTERS



Roomali Roti Maker



SS Rack for Kitchen and Cold Room



Hot & Cold Bain Marie



Kitchen Utility Trolley



Bain Marie with Hotcase



6 Vessel Bain Marie



Tandoor



Bain Marie with Service Trolley



Sandwich Griller



Hot Case Counter



Sink



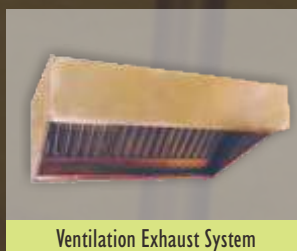
Soil Collecting Bin



Chapati Plate with Puffer



Platform Trolley, Luggage Trolley



Ventilation Exhaust System



Canteen Tables

KITCHEN EQUIPMENTS

# WATER COOLERS



For  
**OFFICES**  
**SCHOOLS**  
**BUSINESSES**  
**PUBLIC PLACES**

**NHC (Normal / Hot / Cold) Dispensers available**

- ❖ All equipment are custom built to requirement.
- ❖ Kitchen planning & layout is provided free of cost.
- ❖ This will enable optimum use of equipment space saving and easy movement of staff.

## CONSTRUCTION DETAILS OF KITCHEN EQUIPMENT

- ❖ Frames made of MS / SS-304 Angles and Flats
- ❖ Electrical Heaters are specially designed tubular elements confirming to ISI Standards
- ❖ Insulated with Mineral Wool, whenever required
- ❖ **SINK UNIT** - Top and sink bowls are made from 16 swg. SS-304
- ❖ **HOT CASE** - Outer shell from 18 swg. SS-304 and inner will be with 16 swg. aluminium sheets insulated with Mineral/Glass wool
- ❖ **BAIN MARIE** - Top and inner water tank made from 16 swg. SS-304. Containers are made of SS-304 with lid

## CONSTRUCTION DETAILS OF REFRIGERATION EQUIPMENT

- ❖ Framework made of MS / SS. Outer body fabricated from 22 SWG 304 G.R.
- ❖ High quality copper tubing wrapped around and fully soldered on all surfaces to ensure uniform and rapid cooling
- ❖ Four side magnetic type door gaskets with a double chamber to ensure a perfect seal
- ❖ CFC free Polyurethane PUF insulation - reduces power consumption
- ❖ All units fitted with CFC Free compressor with 12 months Warranty

**NOTE:** Specifications & Designs are subject to change without any prior notice.



Door No. 2-104A, Malpe Road, Gopalpura,  
Santhekatte, Udipi - 576105.

Phone : (0820) 2583534, 2583535  
Mobile : +91 94488 57535  
E-mail : canaraequipments@gmail.com  
canaraudupi@yahoo.in

[www.canaraequipments.com](http://www.canaraequipments.com)